



Educational Brief

Information for Data Submission

Issue 24: November 2013

When a PSO is ready to start submitting data to the PSOPPC, there is a wealth of documents available on the Website to help with the creation of the Clinical Document Architecture Extensible Markup Language (CDA XML). Wading through these documents can be overwhelming. To help with the process, this flowchart illustrates the progression of preparation for the coding.

To be able to start creating the XML, the user must know HL7 CDA. Patient Safety Events must be transmitted to the PSOPPC using the CDA XML file format. The best place to learn about CDA XML file format is the HL7 Website www.hl7.org. The [AHRQ Common Formats](#) section of the Website also has additional documentation for further review.

Further, the [Resource Workbook](#) provides the necessary validation rules. The PSOPPC accepts only Patient Safety Events submitted as XML files meeting the technical specifications for Common Formats Version 1.1 or Version 1.2. Using both the Implementation Guide and Resource Workbook together helps one to understand the approach needed to code with Object Identifiers. The [Implementation Guide](#) provides example coding of the XML with the unique identifiers used by the different objects and entities. In order to be accepted by the PSOPPC, each XML file must:

- Conform to the specifications outlined in the AHRQ Common Formats Implementation Guide.
- Contain the data elements defined in the validation (minimum) dataset for the report type.
- Comply with the validation rules outlined in the AHRQ Common Formats Resources Workbook and Flowcharts.

Next, to write the code, the user will need the [Paper Forms of Event Reports Including Data Element Notations](#) and [Flowcharts](#) for the individual categories. These documents provide the data elements and associated answer values (where applicable) that are recommended to be collected based on the report type and event category associated with the Patient Safety Report. The Common Formats Flow Charts also outline the valid paths for a complete Patient Safety Report.

The CDA.xml file is available; however, because of the many choices for the events, there is not one single XSL file to validate your code. You will need to use the PSOPPC import processor to submit the data and validate the XML.

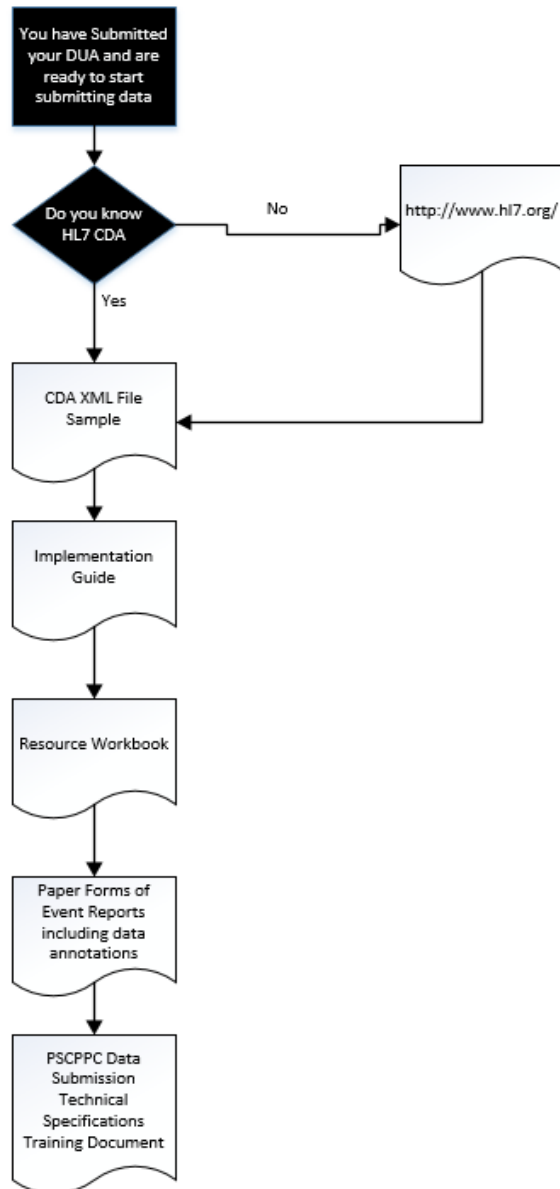
The CDA.xml file is available; however, because of the many choices for the events, there is not one single XSL file to validate your code. You will need to use the PSOPPC import processor to submit the data and validate the XML.

Helpful hints for submitting XML file(s) to the PSOPPC:

- To submit XML files using the PSOPPC Website, use one of the following Web browsers:
 - Microsoft Internet Explorer 7.0 or higher
 - Mozilla Firefox version 3.0 or higher
- The PSOPPC will only accept XML files (.xml file extension) and ZIP files (.zip file extension) containing XML files. All other file types will be rejected.
- XML and ZIP file names must be less than 45 characters in length and cannot contain any of the following characters: \ / : & * ? " < > |
- Each batch of files (collection of one or more files submitted within the same upload submission) cannot exceed a file size of 80 MB.
- Each batch of files can only contain up to 50 individual files. If more than 50 files are to be submitted, submit the files as a ZIP file.
- The Data Submission function allows submission of XML files as production or test files. Test files will not be sent to the Network of Patient Safety Databases (NPSD). Submitting test files allows the PSO or vendor to test the required file and data formats.
- After successfully submitting file(s), it is important to review submission results (reference the Data Submission tables and the Generate PSE Reports tab, on the left navigation menu, for more information on submission results).



Figure 1. Data Submission Flow



Technical Assistance

Contact the PSOPPC Help Desk for additional technical assistance via email at support@psoppc.org, or via phone at (866) 571-7712, Mon-Fri, 9am – 5:30pm, ET. You can also submit an inquiry via our [Contact Us](#) page on the [PSOPPC website](#).